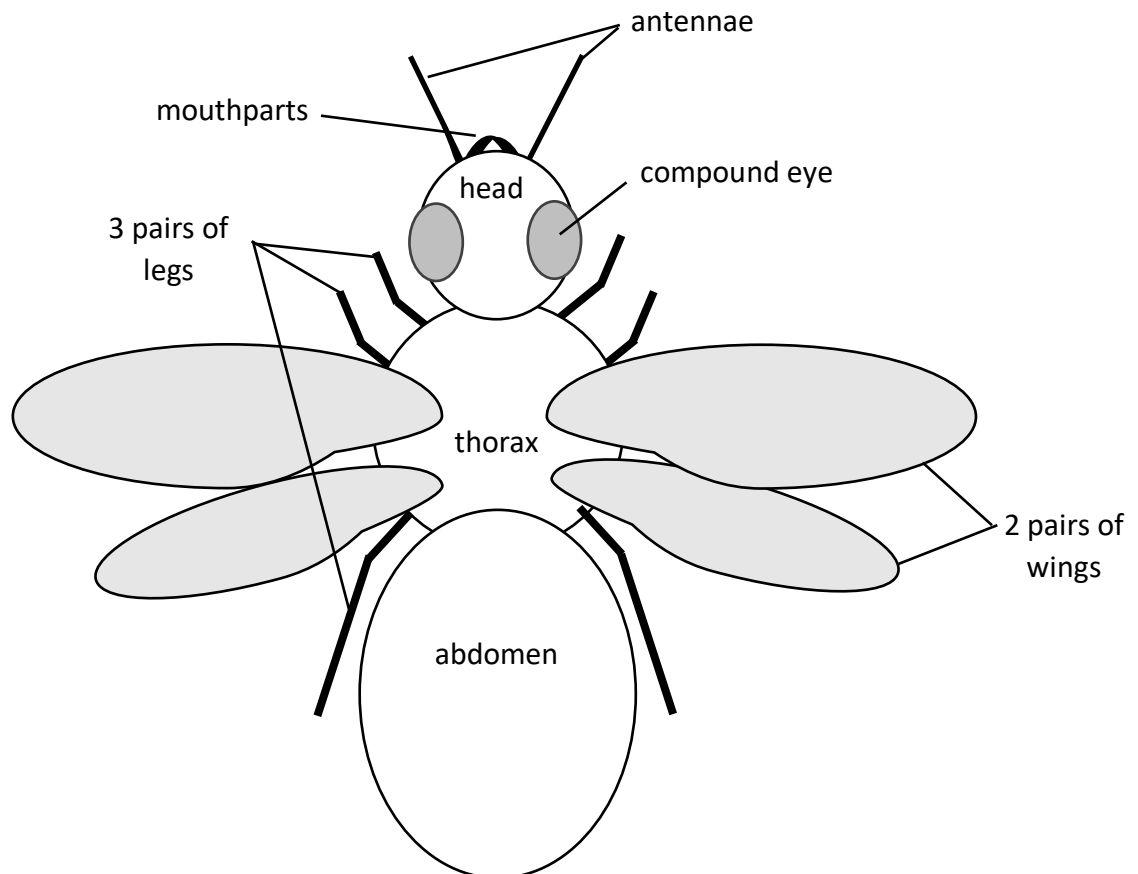




All insects have the same basic body plan, with their body made up of three sections:

- **Head** – where the mouthparts, compound eyes and antennae are found
- **Thorax** – which always has three pairs of legs and (usually*) two pairs of wings
- **Abdomen** – where most of the digestive and reproductive processes happen



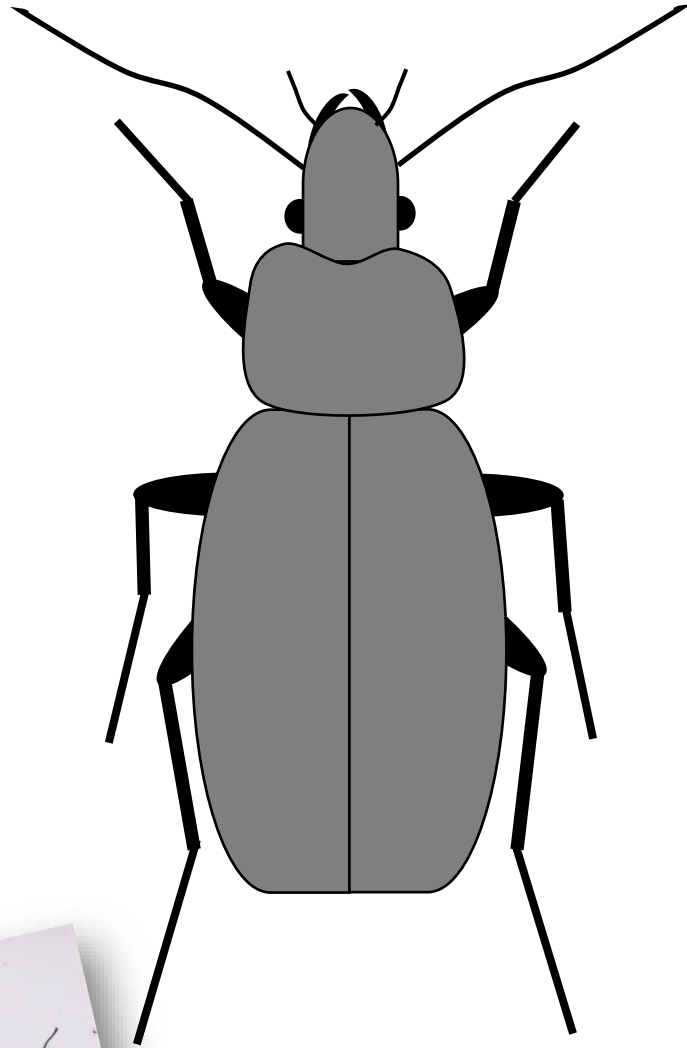
*some primitive insects have no wings and flies have only one pair of wings, their second pair now reduced to two little structures called 'halteres', which help them to balance when flying (you can see these in the hoverfly diagram).

Using the diagrams and photos on the attached sheets to guide you, make models of the different insects using natural things that you find outside, such

as leaves, seeds, berries, twigs, stones, pine/fir cones, etc. Think about what other insects you could make.

We would love to see your creations, so if you'd like to, please send photos to Sally at Budding Nature: info@buddingnature.co.uk

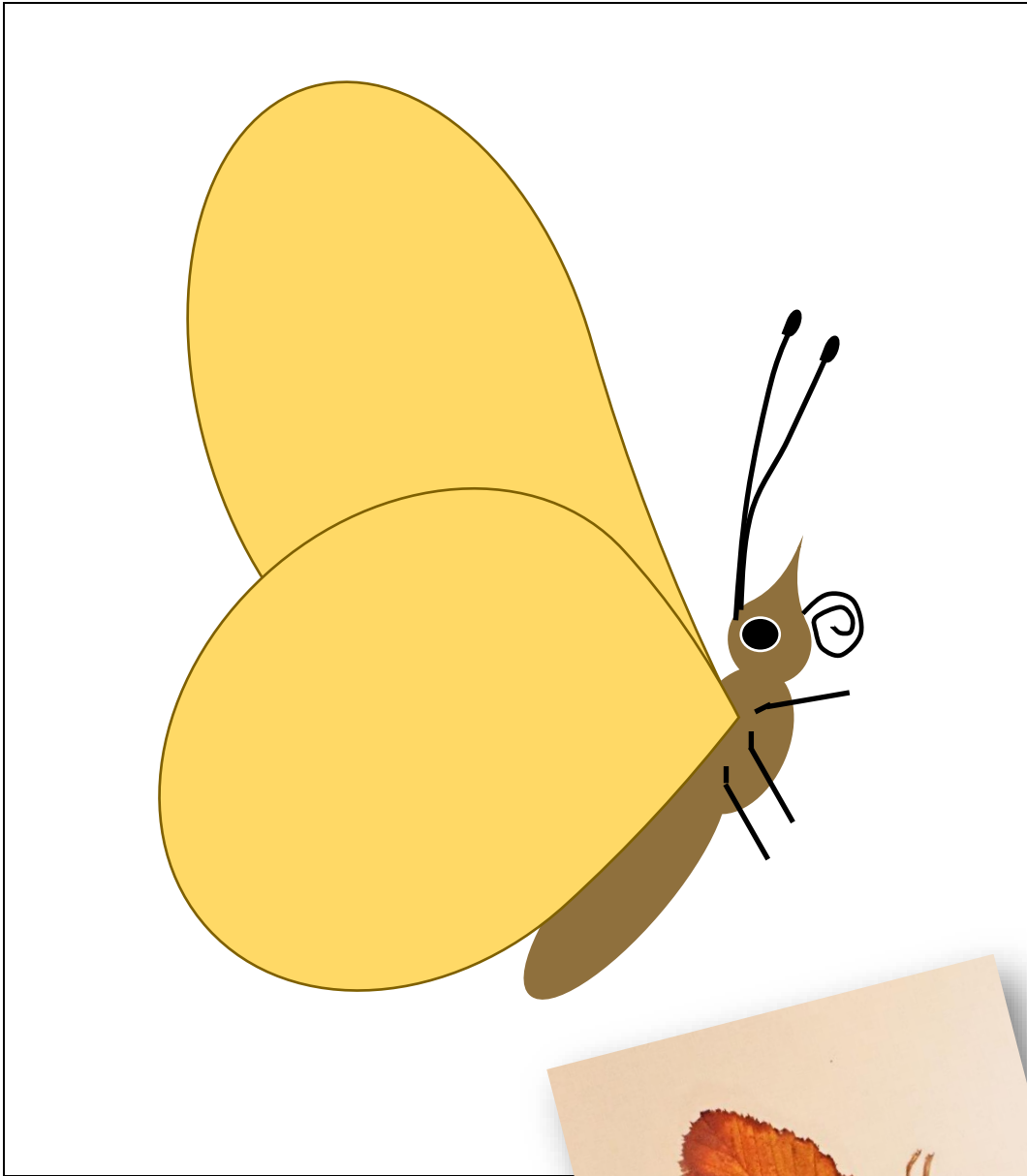
Beetle



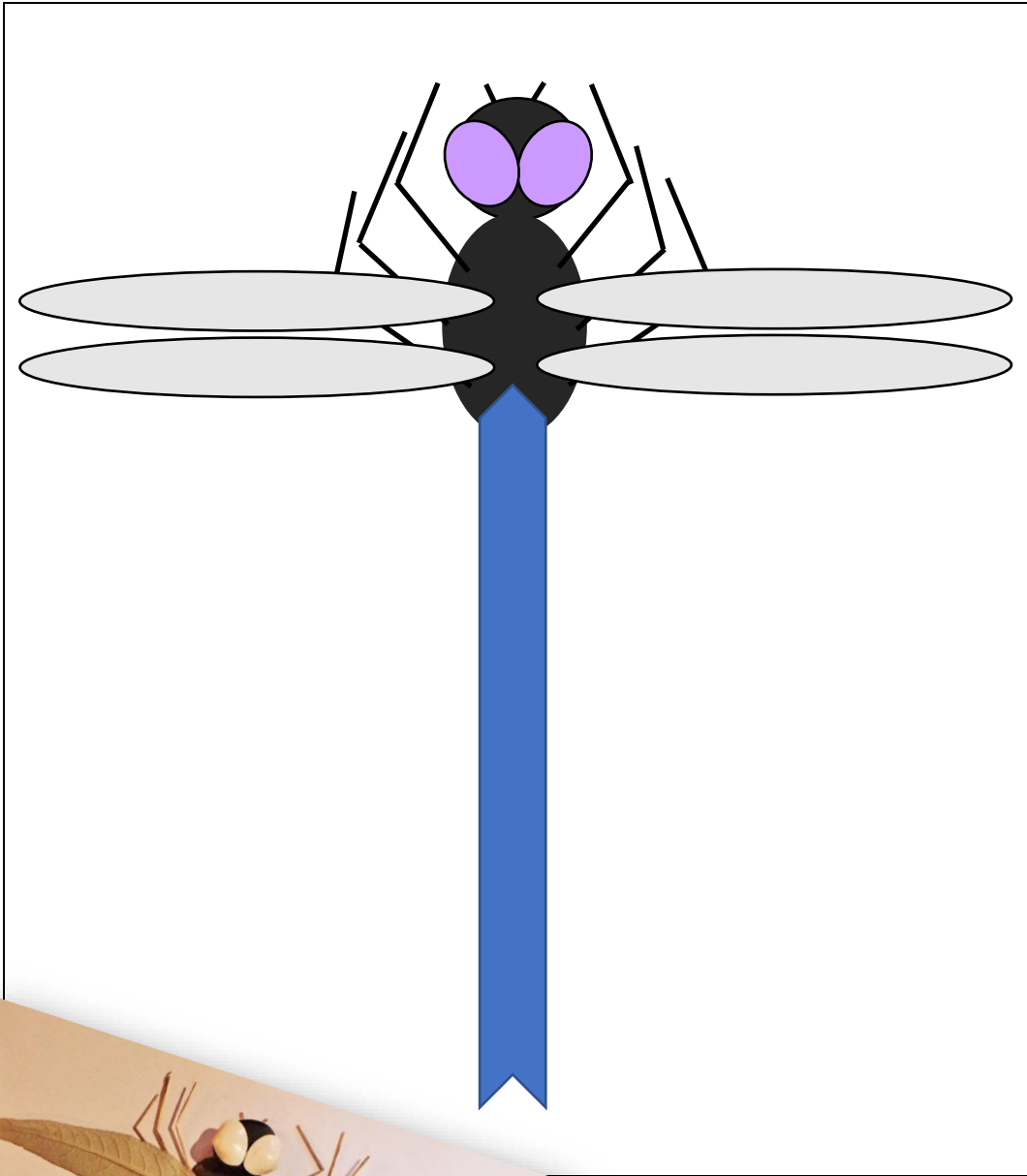
Bumblebee



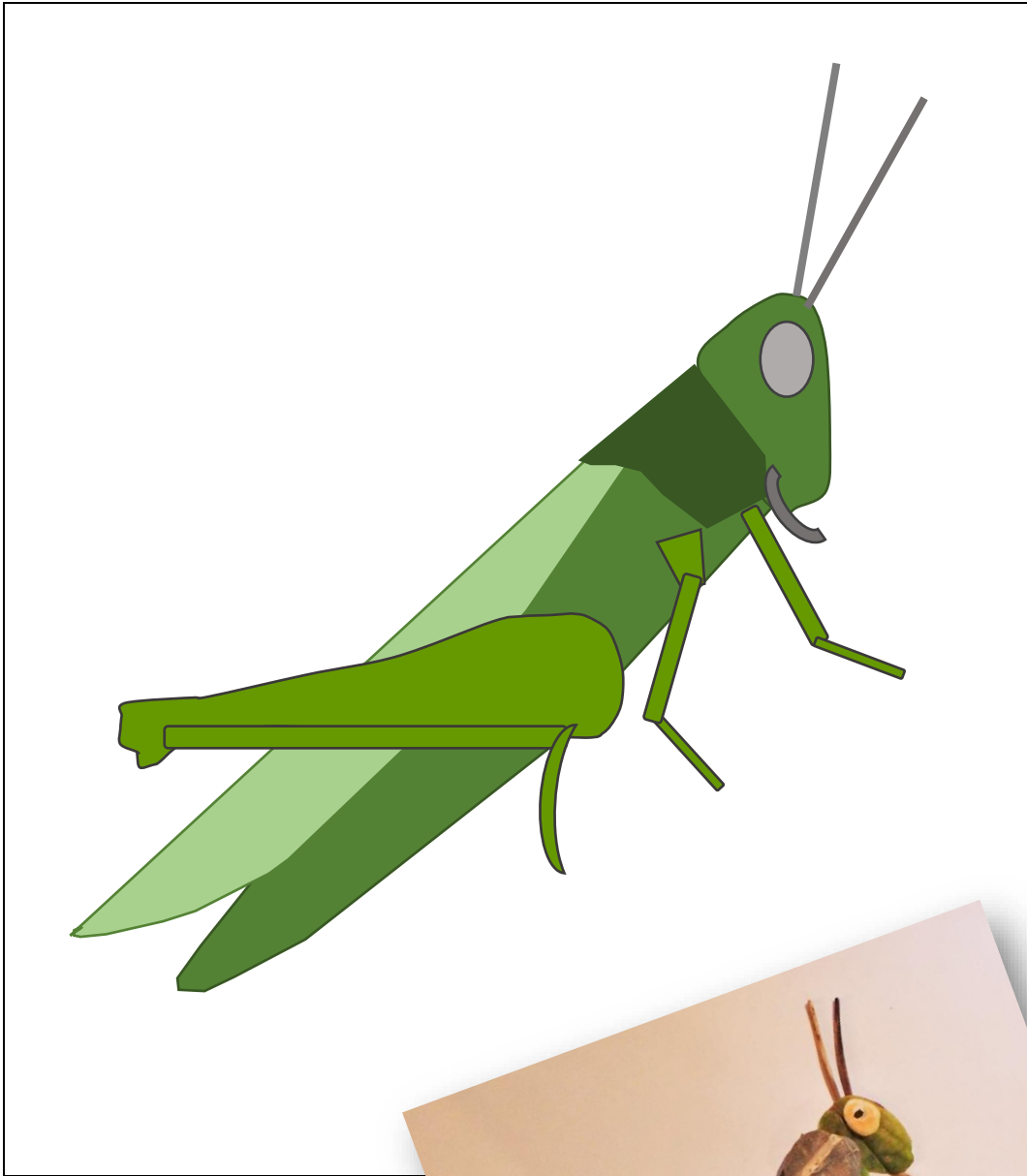
Butterfly



Dragonfly



Grasshopper



Hoverfly

